



PieceCounter

Keyword Setup Guide

The Keyword feature of the PieceCounter system requires a connection to your point of sale database. This is done with a web service that is hosted on a web server. This server must be running Windows 2000, XP Pro, Vista Business, Ultimate or any Windows Server OS. It must also be able to connect to your point of sale database.

1. The first step in setting up the Keyword feature is to install Internet Information Server (IIS) if it is not already installed. To install IIS navigate to:

Control Panel

Add or Remove Programs

Click on add/Remove Windows Components (along the left side of the window)

Verify that there is a check next to Internet Information Services (IIS). If not, check and click next.



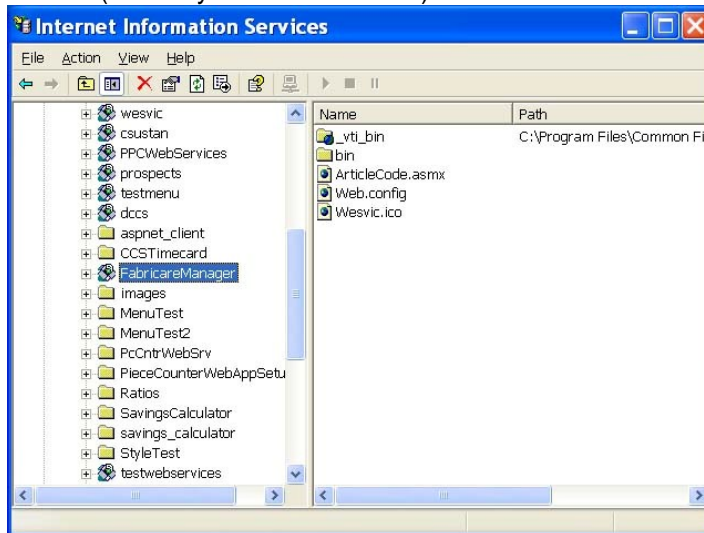
2. Uninstall any prior versions of the PieceCounter Conduit.
3. Download from the Wesvic.com web site and install the Web Service software for your point of sale system.
4. Configure the web service through IIS for your point of sale system. Navigate to:

Control Panel

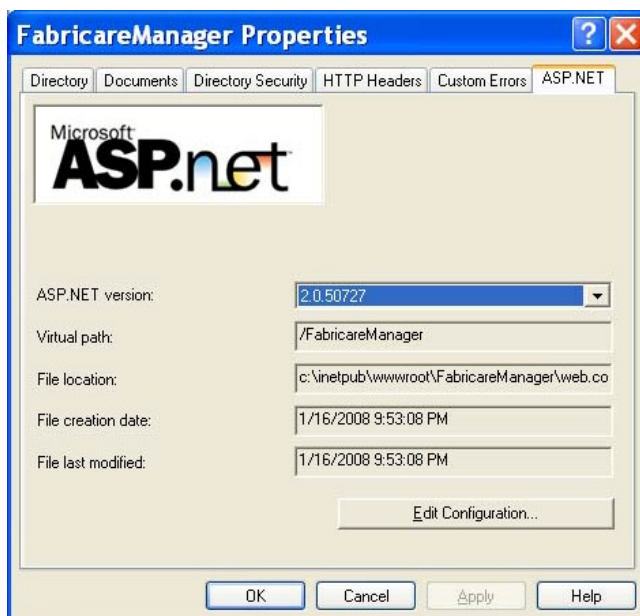
Administrative Tools

And start Internet Information Services

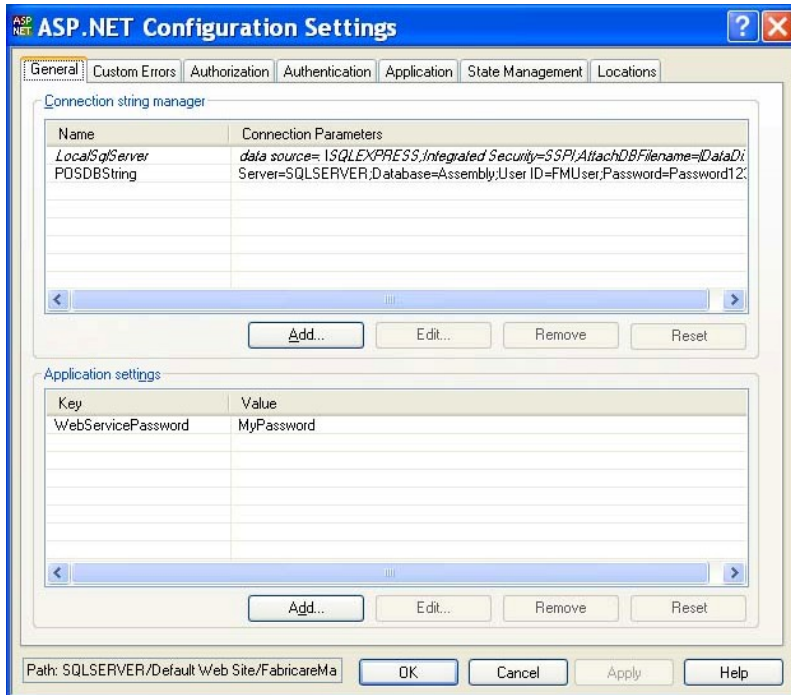
- Expand your server, Web Sites and the web site where you installed the web service (normally Default Web Site).



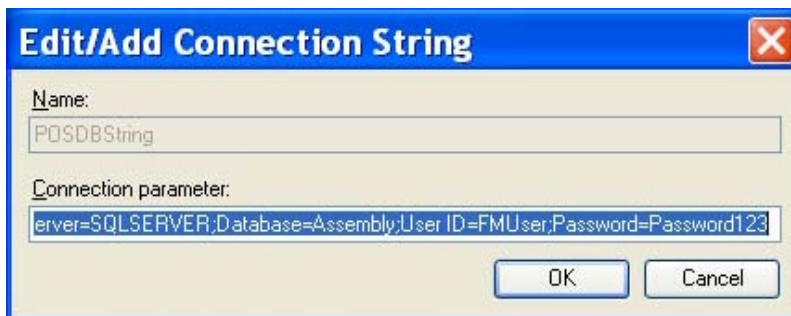
- Right click on the directory where you installed the web service (FabricareManager in this example) and select Properties
- Click on the ASP.NET tab.



- Click on Edit Configuration.

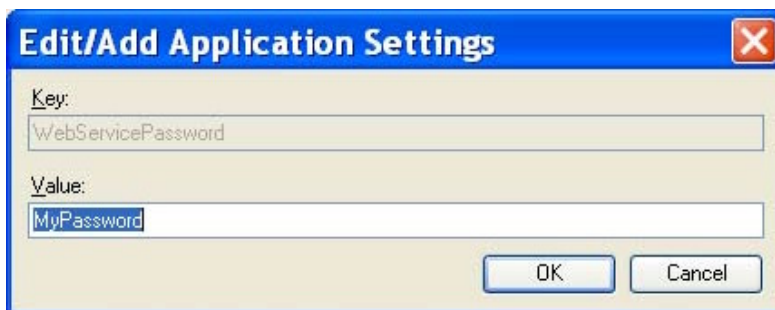


- Select the POSDBString entry under Connection string manager and click the Edit button.



Change Server to the name of the server where your point of sale database resides.
Change User ID and password to a database user that has select access to the database.
Click OK.

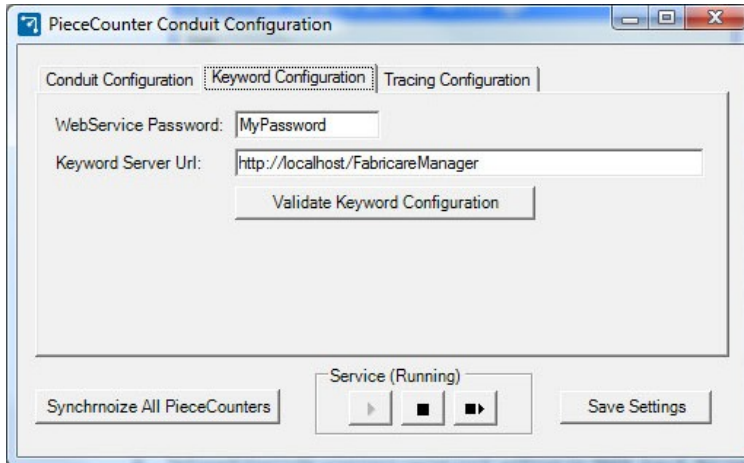
Select the WebServicePassword key under Application settings and click the Edit button.



Change the Value to a secret password that will also be entered on the Keyword Configuration tab in the PieceCounter Conduit Configuration program.

Click the Ok button on the Edit/Add Application Settings window, ASP.NET Configuration Settings window and on the Properties page of the web service.

5. Start the PieceCounter Conduit Configuration program and click on the Keyword Configuration tab.



Change the Webservice Password to the password you entered in the IIS properties for the web service.

Change the Keyword Server Url to the server and path where you installed the web service.

Click the Validate Keyword Configuration button and resolve any problems.

Save your settings and restart the service.

6. Set each barcode scanners serial port settings to 9600 baud, No parity, 8 data bits and 1 stop bit.
7. Log into the web and setup your Keyword Priorities (under Configuration). See section 5.2.11 of the configuration guide.
8. Log into the web and setup your Keywords (under Configuration). See section 5.2.12 of the configuration guide.
9. Log into the web and setup your Keyword Groups (under Configuration). See section 5.2.13 of the configuration guide.
10. Log into the web and setup your Keyword Group Items (under Configuration). See section 5.2.14 of the configuration guide.
11. For each station that will be using the keyword/barcode interface, check the Enable Keyword Lookup checkbox and select a Keyword Group from the drop list. See section 5.2.5 of the configuration guide.
12. See the additional global options in section 5.2.2 of the configuration guide for additional options.
13. Perform a sync at each station (or request a sync on all PieceCounters from the Conduit Configuration).
14. Connect the barcode scanners to the PieceCounter serial port.
15. Start a work session and scan a barcode on a garment.